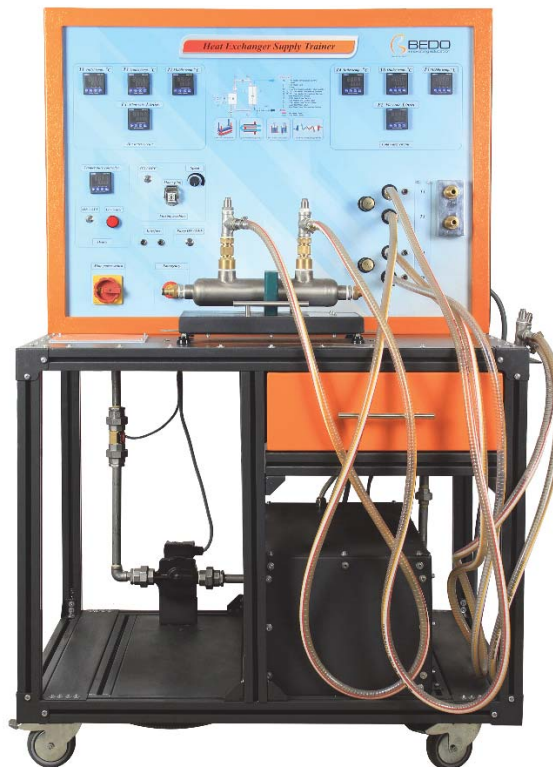


HT - 015

# Heat Exchanger Supply Trainer

## Overview

The heat exchanger supply unit is a supply unit of the heat exchangers trainer to supply the training system with hot and cold water necessary for experiments.



## Specifications

- The unit should be connected by water hoses to the water chiller unit and the heat exchangers modules unit to form the integrated heat exchangers trainer.
- The unit consists of an operation panel that includes ON/OFF switch of the unit, emergency switch, temperature digital displays of hot and cold water at inlets and outlets of the heat exchangers modules.
- The operation panel also includes water connections, temperature sensor's electrical connections, heater operation switch, heater temperature control, stirring heat exchanger electric motor operation and speed control and flow regulation valves of cold and hot water.
- The lower part of the unit consists of a water tank with heater inside to heat water to be provided to the heat exchangers modules and a hot water pump to deliver the hot water from the hot water tank to the modules.

## Experiments

- Plotting temperature curves
- Determining the mean heat transfer coefficient
- Comparing different heat exchanger types

## Technical Data

### Pump

- » Power consumption: 120W
- » Max. Flow rate: 600L/h
- » Max. Head: 30m

### Heater

- » Power output: 3kw
- » Thermostat: 0 to 70°C
- » Hot water tank: approx. 10L

### Measuring Ranges

- » Temperature: 0 to 100°C
- » Flow rate: 20 to 250L/h

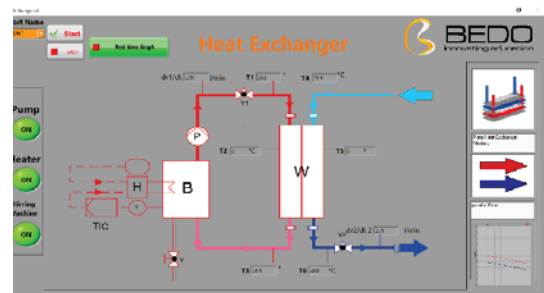
220V, 50Hz, 1 phase

## Accessories

- User manual for the training system
- BEDO software
- The heat exchanger supply unit includes the following accessories:
  - Hoses.
  - T connections.
  - Temperature sensors.
  - Power cables of the temperature sensors.

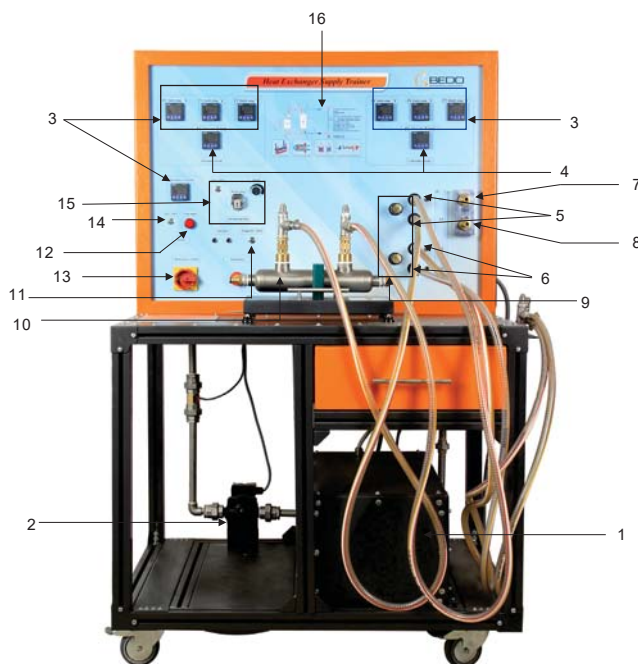
## Options

- Laboratory PC
- Tubular Heat Exchanger.
- Plate Heat Exchanger.
- Shell and Tube Heat Exchanger.



Software Screenshot

## Component



1	Hot water tank.
2	Hot water pump.
3	Temperature displays
4	Flowrate displays
5	Inlet and outlet of Supply unit hot water
6	Inlet and outlet of Supply unit cold water
7	Cold water inlet at heat exchanger supply unit.
8	Hot water outlet at heat exchanger supply unit.
9	Regulation valves.
10	Heat exchanger
11	Hot water pump operation switch.
12	Low water level indication LED.
13	ON / OFF switch of the heat exchanger supply unit.
14	Heater operation switch.
15	Stirring machine control panel
16	Schematic diagram of the cycle.